



# Madge WLAN Probe 2



Data Sheet  
Part Number 97-03

Protects your network  
from unauthorized  
wireless intrusion



- Detects rogue Access Points
- Reports unauthorized wireless activity
- 802.11 a/b/g and Bluetooth detection
- Continuous network protection
- Intelligently filters data

## Wireless networking today

Wireless networking is set to become the standard for corporate networking.

It offers the Enterprise substantial efficiency and productivity gains, enabling staff to work faster and smarter:

- It's very cost-effective to roll out.
- It offers unparalleled flexibility and user mobility.
- Change offices, work at home or visit your branch offices - it's now all so easy to do.

It *can*, however, introduce new security threats to your network, whether wired or wireless.

All it takes is a single PC, PDA or unsecured access point and anyone within radio range can cut through your existing network boundaries and into the heart of your enterprise.

Wireless technology could enable this to happen without your permission and even without your knowledge, whether your network is wireless or not.

## Reclaim control of your airspace

Wireless networking requires that you think about security in a completely new way.

Physical security and standard network management techniques are no longer enough. No matter how well you're already managing your network, you must now specifically guard against wireless intrusion.

The Madge WLAN Probe is a unique tool that protects your corporate

data by reclaiming control of the airspace around your enterprise.

## Quad-technology probe

The WLAN Probe is the world's first wireless intrusion detection probe to detect the presence of 802.11 a/b/g and Bluetooth devices.

A small, discreet hardware unit, typically mounted on a ceiling, it scans all the Wi-Fi channels and *simultaneously* monitors for the presence of Bluetooth-enabled PDAs, laptops and cellular phones.

## Intelligent analysis

Custom written software allows the WLAN Probe to perform an intelligent analysis on 802.11 a/b/g and Bluetooth transmissions for known attack profiles and other security irregularities occurring in your airspace. It allows you to distinguish between wireless devices and access points according to three categories:

- Those that belong to your network
- Those that belong to your neighbor's network
- Those of possible intruders

## Fully configurable

You can tailor the WLAN Probe so that it displays only user-selectable events of interest and eliminates false alarms. This means there is less distraction from events that are not considered a threat.

It also means that the information provided is more accurate and more usable. The WLAN Probe also identifies where wireless security (e.g. encryption) is not in use.

## Stepping stone

The WLAN Probe is the ideal stepping stone to move organizations from a wired to a wireless environment.

For organizations that have a no-wireless policy today, the WLAN Probe is the ideal way of detecting unauthorized wireless activity that is likely to be occurring through the use of wireless-enabled products. For organizations that have already deployed wireless, the WLAN Probe is the ideal way to detect wireless use that may be presenting a security threat and to manage and optimise the use of wireless devices.

## Ease of use

WLAN Probes are standalone hardware devices, simple to install and use. They can be powered by an Ethernet cable, so long as you have an 802.3af compliant hub or a power injector.

The number of WLAN Probes you require depends on the size of your organization. Individual WLAN Probes can be placed anywhere on the enterprise network.

The WLAN Probe as a stand-alone device (i.e. not used with the Madge WLAN Probe Monitor) uses an HTML interface to communicate with network administrators via a web browser on their desktop.

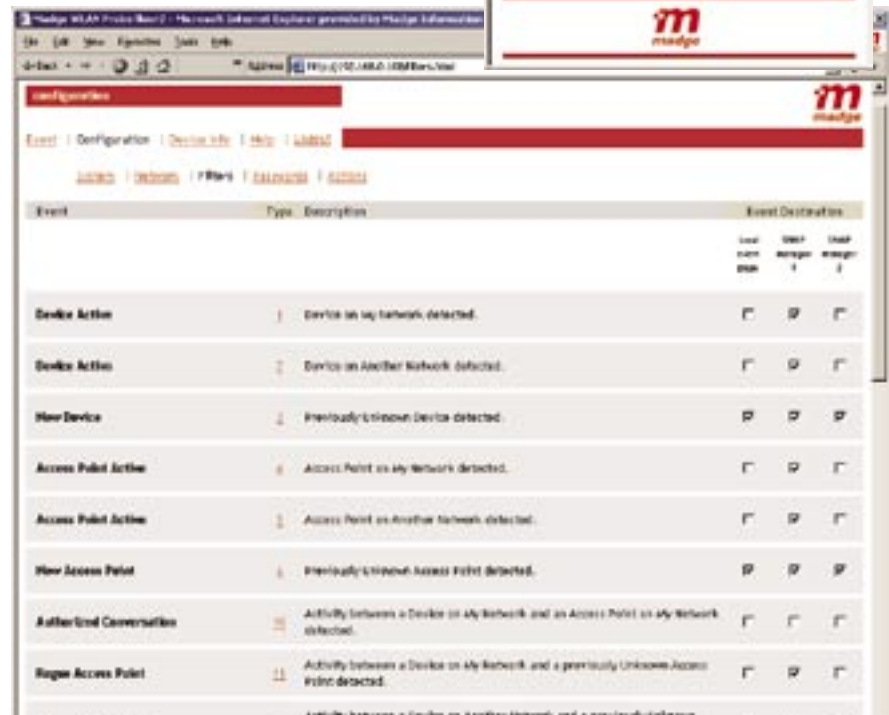
A small summary event window for each WLAN Probe displays a running total of events of interest. These can be examined in detail through your browser.

The WLAN Probe also provides a rich set of filterable SNMP traps, which can be sent to your existing network management system.

## Madge WLAN solutions

When managing multiple WLAN Probes, it is recommended to use the **Madge WLAN Probe Monitor** (95-71). For additional information on all Madge WLAN Solutions, including multi-vendor WLAN management and Access Points visit [www.madge.com/wireless](http://www.madge.com/wireless)

- The event log displays details of security risks and unauthorized wireless activity in a rolling list of up to 1024 events
- Event filtering allows you to filter events according to your security policies - there are 28 event types that can be detected.
- Categorization lets you give devices friendly names and allows you to see where security risks originate



## Features & Benefits

### SIMPLE CONNECTION TO WIRED LAN

WLAN Probes are quickly deployed for cost effective roll-out and low cost of ownership.

### SCALABLE

For larger environments, the WLAN Probe can be used with the WLAN Probe Monitor (95-71)

### 802.3AF - POWER OVER ETHERNET

Only one connection is needed to connect the network and to power the unit. No need to locate the WLAN Probe near a power socket.

### ROUND-THE-CLOCK MONITORING

Proactively monitors the airspace 24 x 7 to capture, store and relay events as they occur.

### BROWSER-BASED INTERFACE

Browsers are easy to use from virtually any PC in the enterprise without the need to install additional software. Each WLAN Probe has its own web server built in so the operator can easily view list of events, or configure the device.

### IDENTIFICATION OF FRIENDLY DEVICES AND AUTHORIZED COMMUNICATIONS

Simply select any devices you know to be part of your network, access points or wireless PCs and suppress associated events. It is easy to see at a glance who's doing what on the wireless network.

### SECURITY POLICY CONFORMANCE

Monitors wireless connections and automatically alerts when security policy breaches occur.

### EVENT EXPORT

IT and security managers can store records of wireless events on other systems.

### UPGRADABLE FIRMWARE

WLAN Probes can be upgraded to recognize new wireless intrusion patterns and enable other new features.

### CONFIGURATION IMPORT/EXPORT

The user can set up one WLAN Probe, export the database, and re-import it to another WLAN Probe to save time and increase consistency.

### CUSTOMIZABLE FILTERS

Network administrators can choose the types of wireless activity they wish to have reported as events.

### WINDOWS BASED APPLICATION

Madge 'Discover' application automatically discovers probes on a subnet, displays configuration status and allows rapid access to a WLAN Probe's web pages.

## Specifications

<b>PROBED EVENTS</b>	
	1024 event history 512 MAC address cross-reference table 28 event types 28 user defined event filters User notification classes <ul style="list-style-type: none"> <li>o Rogue Access Point</li> <li>o Rogue Station</li> <li>o Rogue Network</li> <li>o Unauthorized Conversation</li> <li>o Unsecured Wireless Device</li> </ul>
<b>PROBED NETWORKS (SIMULTANEOUS)</b>	
	o 802.11 a/b/g with antenna diversity o Bluetooth
<b>PROBE RANGE</b>	
	Up to 45,000 sq ft* (4180 sq metre) * depending on location environment
<b>USER INTERFACE</b>	
	Web browser based (HTTP) <ul style="list-style-type: none"> <li>o Event list</li> <li>o Device information</li> <li>o Configuration</li> <li>o On-line help</li> <li>o Password protected</li> </ul>
<b>NETWORK PROTOCOLS</b>	
TCP/IP	o Single IP address required o Static address configurable o DNS name o DHCP client o NTP client
SNMPv2	o MIB-II o Enterprise MIB o Traps, with up to two trap destinations
<b>DISCOVER APPLICATION</b>	
	Compatible with Windows 98SE, ME, 2000 and XP
<b>LAN INTERFACE</b>	
	Single 10/100Mbps Ethernet, via RJ45 Full/half duplex auto-select Station pin out (directly connects to hub or switch without crossover cable)
<b>MOUNTING</b>	
	Desk, wall, or ceiling Mounting bracket included
<b>INDICATORS</b>	
	Tri-color status LED Network activity LED
<b>ENVIRONMENTAL</b>	
	Operating temp 0 to +40° C Storage temp -40 to +85° C Humidity +10 to + 90% non-condensing
<b>POWER SUPPLY</b>	
	Power supply to meet local requirements, or IEEE802.3af power over LAN connection
<b>APPROVALS</b>	
802.11 RADIO	802.11 a/b/g compliant - 91 dBm rx sensitivity at 11 Mbps - 73 dBm rx sensitivity at 54 Mbps
BLUETOOTH RADIO	Bluetooth 1.1 qualified -90dBm rx sensitivity
SAFETY	C.S.A 22.2 No. 60950 EN60950
RADIO COMPLIANCE	FCC part 15 EN 300 328 - 2
EMC COMPLIANCE	FCC part 15 EN 300 489 - 17

## Office Locations

### Worldwide Headquarters

Madge Limited  
Madge House  
Priors Way  
Maidenhead  
SL6 2HP  
United Kingdom  
Tel +44 (0) 1628 408000  
Fax +44 (0) 1628 408010

### Deutschland

Madge Limited  
Leopold Strasse, 244  
Munich 80807  
Germany  
Tel +49 (0) 89 24 44 52 190  
Fax +49 (0) 89 24 44 51 200

### United States of America

Madge Limited  
28465 Cleveland Street  
Livonia MI 48150  
USA  
Tel (734) 266 1915  
Fax (734) 266 1916

## Ordering Information

Madge WLAN Security and Management	Part #
Madge WLAN Probe 2	97-03
Madge WLAN Probe 2 (5 pack)	97-04
Madge WLAN Probe 2 (10 pack)	97-05
Madge WLAN Probe Monitor with 5 Probe License	95-71
Madge WLAN Probe Monitor and 2 x Probe 2 Starter Pack (inc. 1 x Probe Monitor, 2 x Probes, 5 Probe License)	95-75
Madge WLAN Probe Monitor additional 5 Probe License	95-81
Madge WLAN Probe Monitor additional 10 Probe License	95-82
Madge WLAN Probe Monitor additional 15 Probe License	95-83
Madge WLAN Probe Monitor additional 50 Probe License	95-84

## Madge Wireless and Token Ring Networking

Madge Limited is a global supplier of advanced networking product solutions to enterprises, and is the market leader in Token Ring networking. Madge is pioneering next generation networking solutions, which enable the painless and secure deployment of Wireless networks in enterprises while protecting customers' investments in existing LAN and Token Ring. Madge's principal business centres are located in Maidenhead, United Kingdom; Munich, Germany; and New York, USA. Information about Madge's complete range of products and services can be accessed at [www.madge.com](http://www.madge.com).

Madge reserves the right to change specifications without notice.

Madge, the Madge logo, and Madge WLAN product names are trademarks and in some jurisdictions may be registered trademarks of Madge. Other trademarks appearing in this document are the property of their respective owners.

© Copyright 2003 Madge  
All rights reserved